

**Analysis of Parcels Intersecting Proposed River Protection Overlay Area
50 feet on First Order Headwater Streams and 100 feet on all Larger Streams**

Note: This summary page includes only parcels in the Eightmile River Watershed that are on perennial streams. Protected open space parcels and parcels abutting Lake Hayward are not included.

- 209 Parcels Intersect the Proposed River Protection Overlay Area – 3.7% of all parcels in town
- 737 Total Acres in the Proposed River Protection Overlay Area – 2% of the total town area
- 49% of all Acres in the Proposed River Protection Overlay Area are Already Regulated Wetlands (359 acres)
- 100 % of all Acres in the Proposed River Protection Overlay Area are Already Within the Inland Wetlands Commission's 100 foot Upland Review Area.
- There is No Creation of Non-buildable Lots

East Haddam Summary - Analysis of Parcels Affected by 50 foot Riparian Setback on 1st Order Streams, 100 foot Setback on All Other Streams

Analysis is on Perennial Streams in the Eightmile Watershed and Does Not Include Parcels That Are Already Protected Open Space or Parcels abutting Lake Hayward

June 15, 2005 DRAFT

	# of Parcels	Total Acres of Parcels	Acres in Setback	Setback as Percent of Total Parcel	Acres of Wetlands in Setback	Percent of Wetlands in Setback
East Haddam Totals						
East Haddam 1st Order (50 ft setback)	60	1397	91	7%	31	34%
East Haddam 2nd Order (100 ft setback)	120	5116	541	11%	253	47%
East Haddam 3rd Order (100 ft setback)	21	338	85	25%	59	69%
East Haddam 4th Order (100 foot setback)	8	100	20	20%	16	80%
Total	209	6951	737	11%	359	49%

of Parcels With No Wetlands in Setback

East Haddam 1st Order (50 ft setback)	14	244	8.5	3%	0	0%
East Haddam 2nd Order (100 ft setback)	22	386	26	7%	0	0%
East Haddam 3rd Order (100 ft setback)	2	2	0.3	15%	0	0%
East Haddam 4th Order (100 foot setback)	0	0	0	0%	0	0%
Total	38	632	35	6%	0	0%

of Parcels With >50% Wetlands in Setback

East Haddam 1st Order (50 ft setback)	20	278	26	9%	20	77%
East Haddam 2nd Order (100 ft setback)	62	2532	217	9%	144	66%
East Haddam 3rd Order (100 ft setback)	9	218	61	28%	51	84%
East Haddam 4th Order (100 foot setback)	8	100	20	20%	16	80%
Total	99	3128	324	10%	231	71%

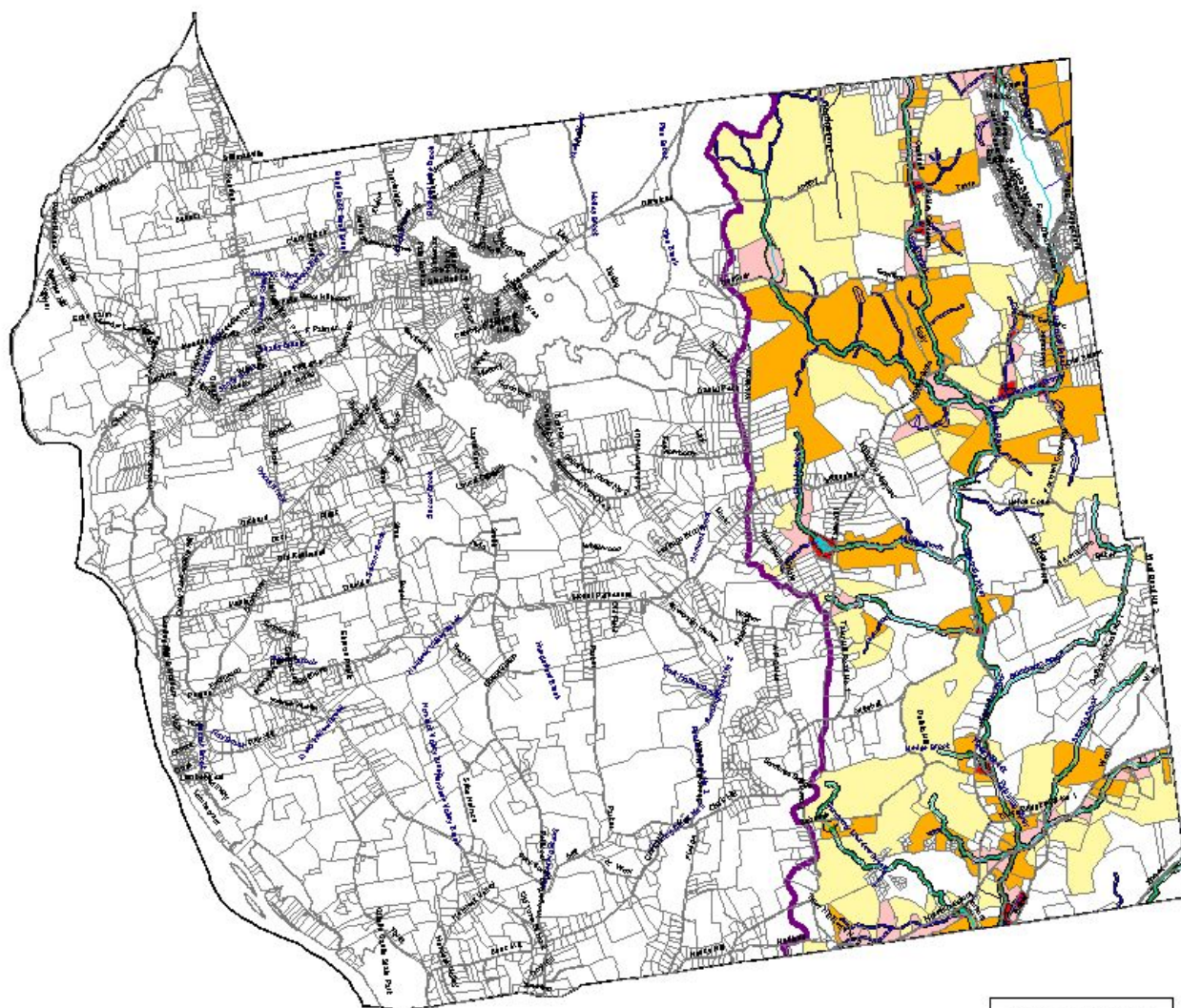
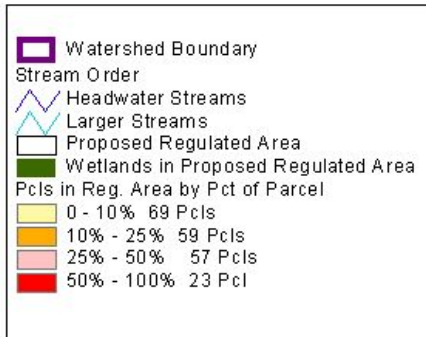
**EIGHTMILE
RIVER**

**WILD & SCENIC
RIVER STUDY**

**PARCELS THAT INTERSECT
PROPOSED RIVER PROTECTION
OVERLAY AREA**

**100' OVERLAY SETBACK
ON LARGER STREAMS,
50' OVERLAY SETBACK
ON HEADWATER STREAMS**

EAST HADDAM



Created for the Eightmile River
 Wild & Scenic Study Commission
 by the CT River Coastal
 Conservation District
 Town boundary, hydrology
 overlaid boundary, roads,
 aerial photo (1990), topographic
 map: CTDEE
 Map for planning purposes.
 Not to be used for conveyance

**Analysis of Parcels Intersecting Proposed River Protection Overlay Area
50 feet on First Order Headwater Streams and 100 feet on all Larger Streams**

Note: This summary page includes only parcels in the Eightmile River Watershed that are on perennial streams. Protected open space parcels and parcels abutting Hamburg Cove are not included.

- 171 Parcels Intersect the Proposed River Protection Overlay Area – 9.8% of all parcels in town
- 428 Total Acres in the Proposed River Protection Overlay Area – 2.1% of the total town area
- 60% of all Acres in the Proposed River Protection Overlay Area are Already Regulated Wetlands (256 acres)
- 100 % of all Acres in the Proposed River Protection Overlay Area are Already Within the Inland Wetlands Commission's 100 foot Upland Review Area.
- The proposed River Protection Overlay is similar to Lyme's recently adopted setbacks in the Gateway Zone.
- There are No New Parcels that are not already Regulated by the Upland Review Area
- There is No Reduction in the Number of Buildable Lots
- There is No Creation of Non-buildable Lots

Lyme Summary - Analysis of Parcels Affected by 50 foot Riparian Setback on 1st Order Streams, 100 foot Setback on All Other Streams

Analysis is on Perennial Streams in the Eightmile Watershed and Does Not Include Parcels That Are Already Protected Open Space or Abutting Hamburg Cove

August 11, 2005 DRAFT

	# of Parcels	Total Acres of Parcels	Acres in Setback	Setback as Percent of Total Parcel	Acres of Wetlands in Setback	Percent of Wetlands in Setback
Lyme Totals						
Lyme 1st Order (50 ft setback)	46	796	32	4%	15	47%
Lyme 2nd Order (100 ft setback)	54	2,038	258	13%	177	69%
Lyme 3rd Order (100 ft setback)	35	266	62	23%	38	61%
Lyme 4th Order (100 ft setback)	14	63	22	35%	6	27%
Lyme 5th Order (100 ft setback)	22	299	54	18%	20	37%
Total	171	3,462	428	12%	256	60%

of Parcels With No Wetlands in Setback

Lyme 1st Order (50 ft setback)	5	173	4	2%	0	0%
Lyme 2nd Order (100 ft setback)	5	127	10	8%	0	0%
Lyme 3rd Order (100 ft setback)	7	12	6	55%	0	0%
Lyme 4th Order (100 ft setback)	7	25	13	50%	0	0%
Lyme 5th Order (100 ft setback)	8	99	8	8%	0	0%
Total	32	436	40	9%	0	0%

of Parcels With >50% Wetlands in Setback

Lyme 1st Order (50 ft setback)	21	366	18	5%	14	78%
Lyme 2nd Order (100 ft setback)	36	1,599	218	14%	166	76%
Lyme 3rd Order (100 ft setback)	21	230	44	19%	36	82%
Lyme 4th Order (100 ft setback)	5	30	8	27%	6	75%
Lyme 5th Order (100 ft setback)	5	119	20	17%	13	65%
Total	88	2,344	308	13%	235	76%

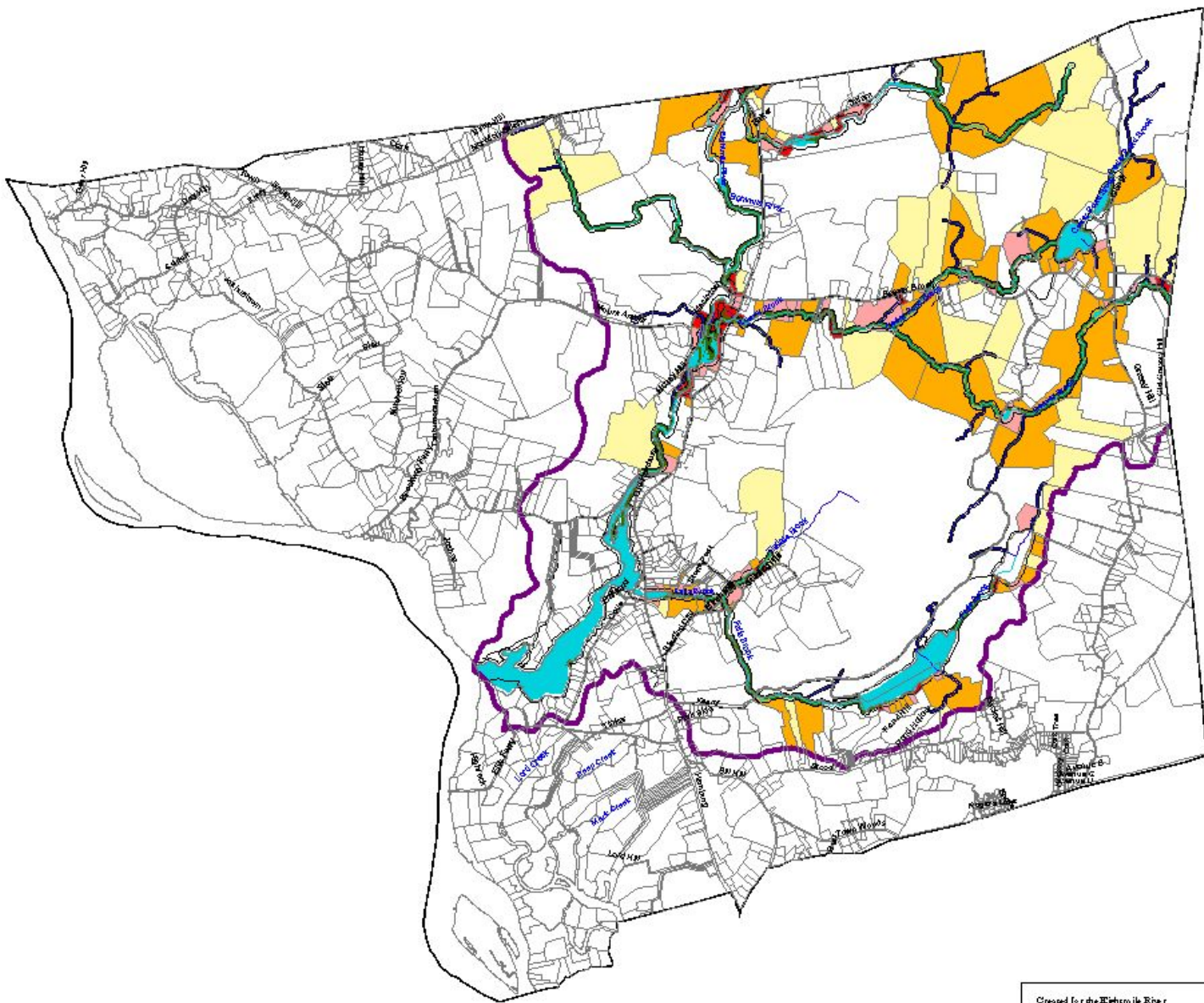
EIGHTMILE RIVER
WILD & SCENIC RIVER STUDY

PARCELS THAT INTERSECT PROPOSED RIVER PROTECTION OVERLAY AREA

**100' OVERLAY SETBACK ON LARGER STREAMS,
50' OVERLAY SETBACK ON HEADWATER STREAMS**

LYME

Watershed Boundary
 Stream Order
~ Headwater Streams
~ Larger Streams
 Proposed Regulated Area
 Wetlands in Proposed Regulated Area
 Pcls in Reg. Area by Pct of Parcel
 0 - 10% 36 Pcls
 10% - 25% 50 Pcls
 25% - 50% 45 Pcls
 50% - 100% 39 Pcls



124000



Created for the Eightmile River
 Wild & Scenic Study Committee
 by the CT River Coastal
 Conservation District

 Town boundaries, hydrology
 watershed boundary, roads,
 aerial photo (1990), topographic
 map: CTDEH

 Map for planning purposes.
 Not to be used for conveyance

Ken Geisler: July 29, 2005

**Analysis of Parcels Intersecting Proposed River Protection Overlay Area
50 feet on First Order Headwater Streams and 100 feet on all Larger Streams**

Note: Analysis includes only parcels in the Eightmile River Watershed that are on perennial streams. Protected open space parcels are not included.

- 239 Parcels Intersect the Proposed River Protection Overlay Area – 13.4% of all parcels in town
- There are 636 Total Acres in the Proposed River Protection Overlay Area – 3.3% of the total town area
- 50% of all Acres in the Proposed River Protection Overlay Area are Already Regulated Wetlands (321 acres)
- 89 % of all Acres in the Proposed River Protection Overlay Area are Already Within the Inland Wetlands Commission's 75 foot Upland Review Area.

Salem Summary - Analysis of Parcels Intersecting Proposed River Protection Overlay Area
50 Feet on First Order Headwater Streams, 100 Feet on All Larger Streams

20-Jul-05

Draft

Analysis is on Perennial Streams in the Eightmile River Watershed in Salem and Does Not Include Parcels That Are Already Protected Open Space

Salem Totals	# of Parcels	Total Acres of Parcels	Acres in Setback	Setback as Percent of Total Parcel	Acres of Wetlands in Setback	Percent of Wetlands in Setback
Salem 1st Order (50 ft setback)	124	3,801	209	5%	107	51%
Salem 2nd Order (100 ft setback)	66	1,541	198	13%	97	49%
Salem 3rd Order (100 ft setback)	41	836	133	16%	69	52%
Salem 4th Order (100 ft setback)	8	588	96	16%	48	50%
Total	239	6,766	636	9%	321	50%

of Parcels With No Wetlands in Setback

Salem 1st Order (50 ft setback)	34	413	34	8%	0	0%
Salem 2nd Order (100 ft setback)	17	255	17	7%	0	0%
Salem 3rd Order (100 ft setback)	5	6	1.2	20%	0	0%
Salem 4th Order (100 ft setback)	0	0	0	0%	0	0%
Total	56	674	52	8%	0	0%

of Parcels With >50% Wetlands in Setback

Salem 1st Order (50 ft setback)	73	1,967	120	6%	92	77%
Salem 2nd Order (100 ft setback)	26	720	99	14%	72	73%
Salem 3rd Order (100 ft setback)	23	384	72	19%	58	81%
Salem 4th Order (100 ft setback)	3	8	2	25%	1.8	90%
Total	125	3,079	293	10%	223.8	76%

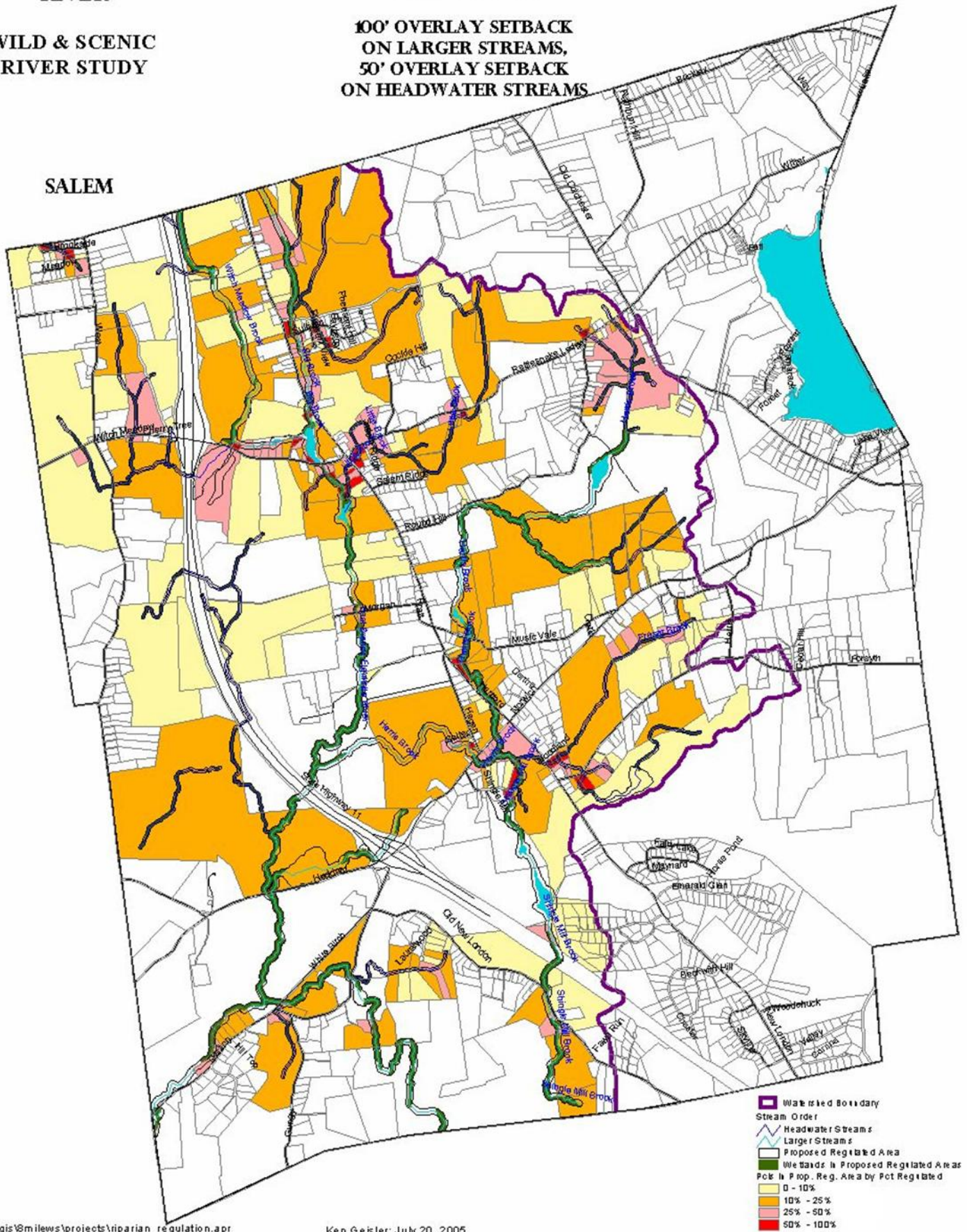
EIGHTMILE RIVER

PARCELS THAT INTERSECT PROPOSED RIVER PROTECTION OVERLAY AREA

WILD & SCENIC RIVER STUDY

**100' OVERLAY SETBACK ON LARGER STREAMS,
50' OVERLAY SETBACK ON HEADWATER STREAMS**

SALEM



- Watershed Boundary
- Stream Order
- Headwater Streams
- Larger Streams
- Proposed Regulated Area
- Wetlands in Proposed Regulated Areas
- Percent in Prop. Reg. Area by Pot Regulated
- 0 - 10%
- 10% - 25%
- 25% - 50%
- 50% - 100%

Eightmile River Watershed Summary - Analysis of Parcels Intersecting Proposed River Protection Overlay Area
50 Feet on First Order Headwater Streams, 100 Feet on All Larger Streams

Analysis Does Not Include Parcels That Are Already Protected Open Space or Abutting Hamburg Cove

August 11, 2005 DRAFT

Stream Order	# of Parcels	Total Acres of Parcels	Acres in Setback	Setback as Percent of Total Parcel	Acres of Wetlands in Setback	Percent of Wetlands in Setback
Total 1st Order	279	7,102	410	6%	197	48%
Total 2nd Order	289	9,544	1,126	12%	598	53%
Total 3rd Order	97	1,440	280	19%	166	59%
Total 4th Order	30	751	138	18%	70	51%
Total 5th Order	22	299	54	18%	20	37%
Total All	717	19,136	2,008	10%	1,051	52%