

EIGHTMILE RIVER

WILD & SCENIC RIVER STUDY

Impervious Surface Current Conditions By Local Basin

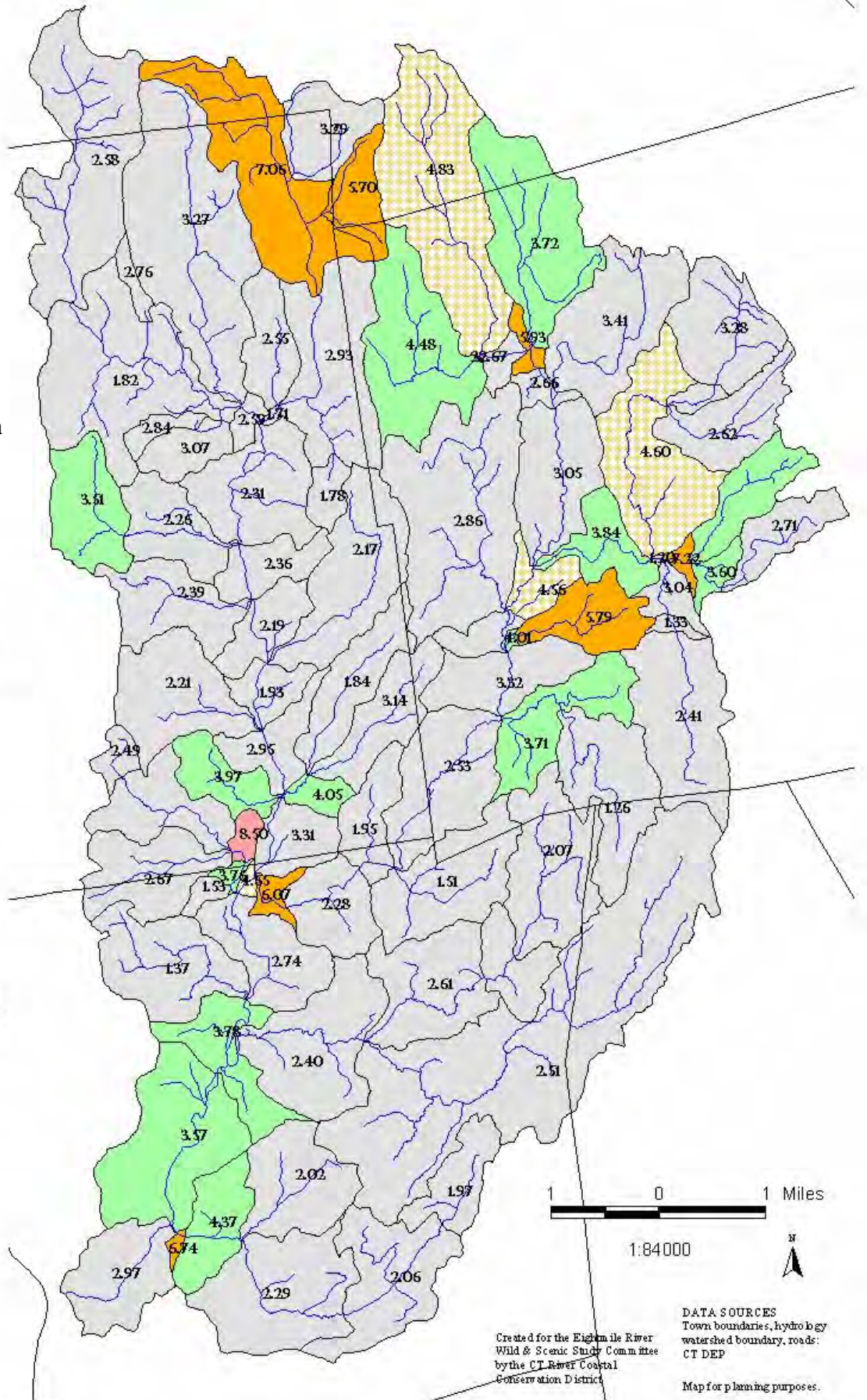
Based On:
2002 Land Cover
 UCONN Center for Land Use Education & Research

% Impervious for Entire Eightmile River Watershed
2.97%

% Impervious - Current Land Cover



Percent of impervious surface calculated using the ISAT extension for Arcview 3.3. Coefficients revised by NEMO for the 2002 Land Cover.



Created for the Eightmile River Wild & Scenic Study Committee by the CT River Coastal Conservation District

DATA SOURCES
 Town boundaries, hydrology
 watershed boundary, roads:
 CT DEP

Map for planning purposes.

Ken Geisler; July 15, 2005

EIGHTMILE RIVER

WILD & SCENIC RIVER STUDY

Impervious Surface Analysis

ASSUMES:

Current Buildings and New Buildings converted to 1/2, 1, or 2 acres of developed land based on zone.

2002 Land Cover (UCONN-CLEAR) Local Basins

% Impervious for entire watershed
 12.6% as an average of the basins;
 11.8% for the regional basin as one entity.

% Impervious @ BO



Percent of impervious surface calculated using the ISAT extension for Arcview 3.3. Coefficients revised by NEMO for the 2002 Land Cover.

Used Calculated Coefficients from Basins BODENS (buildout density) field based on existing buildings & new buildings determined in Buildout Analysis (Community Viz extension for ArcView 3.3).

Population density assumes 2.5 persons per household.

Buildable land excludes developed land, rivers, wetlands, and protected land. Commercial and Industrial land assumed developed. Used the Land Cover Change Scenario in ISAT to convert 2002 Land Cover to Developed for these areas in the calculation.

c:\gis\8milews\projects\isat_mgmtplan_june05_2.apr

