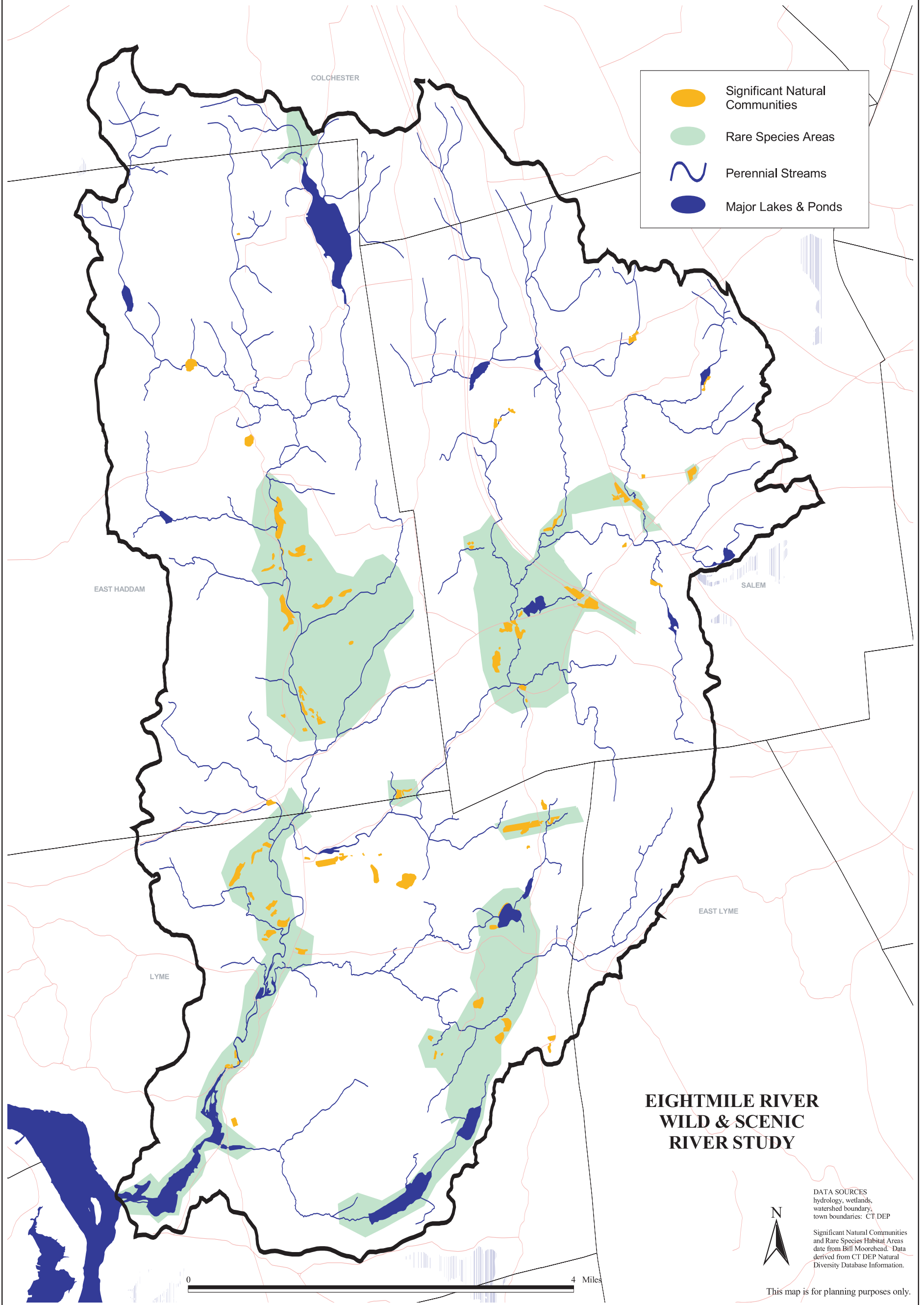


Rare Species Areas & Significant Natural Communities



EIGHTMILE RIVER WILD & SCENIC RIVER STUDY

DATA SOURCES
hydrology, wetlands,
watershed boundary,
town boundaries: CT DEP

Significant Natural Communities
and Rare Species Habitat Areas
date from Bill Moorehead. Data
derived from CT DEP Natural
Diversity Database Information.



This map is for planning purposes only.

Ken Geisler/CRCCD, June 1, 2008

c:\gis\miles\projects\comm_mtg_2\aktst.apr

MAP 5