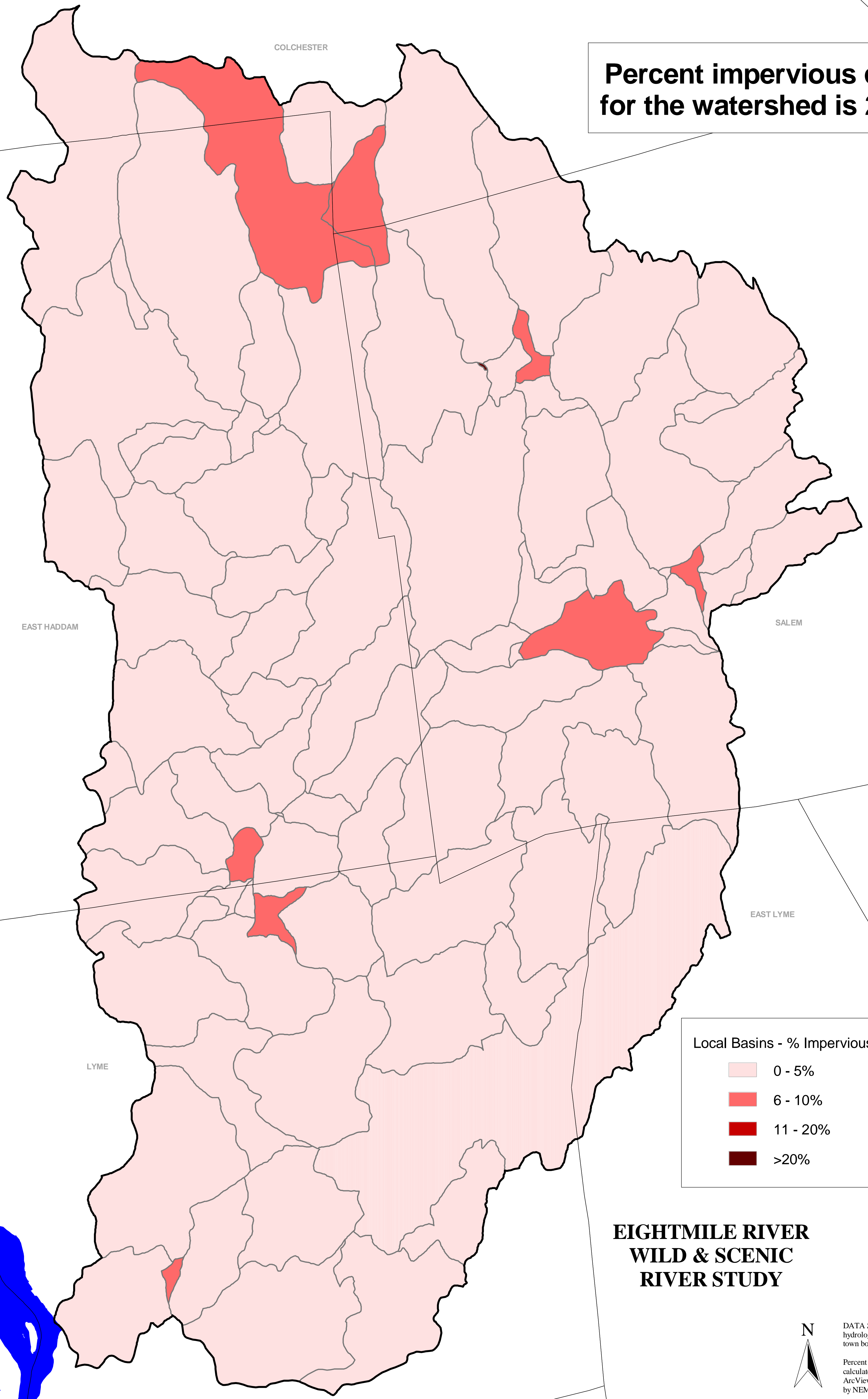


CURRENT IMPERVIOUS COVER OF THE EIGHTMILE RIVER WATERSHED

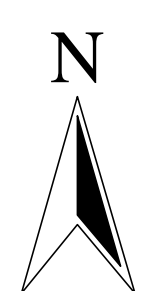


Percent impervious cover for the watershed is 2.97%

Local Basins - % Impervious Cover

Light Pink	0 - 5%
Medium Pink	6 - 10%
Red	11 - 20%
Dark Red	>20%

EIGHTMILE RIVER WILD & SCENIC RIVER STUDY



DATA SOURCES
hydrology, watershed boundary, town boundaries: CT DEP
Percent of impervious surface calculated with ISAT extension for ArcView 3.3. Coefficients revised by NEMO for the 2002 Land Cover.

0 2 4 Miles

1:27000

This map is for planning purposes only.