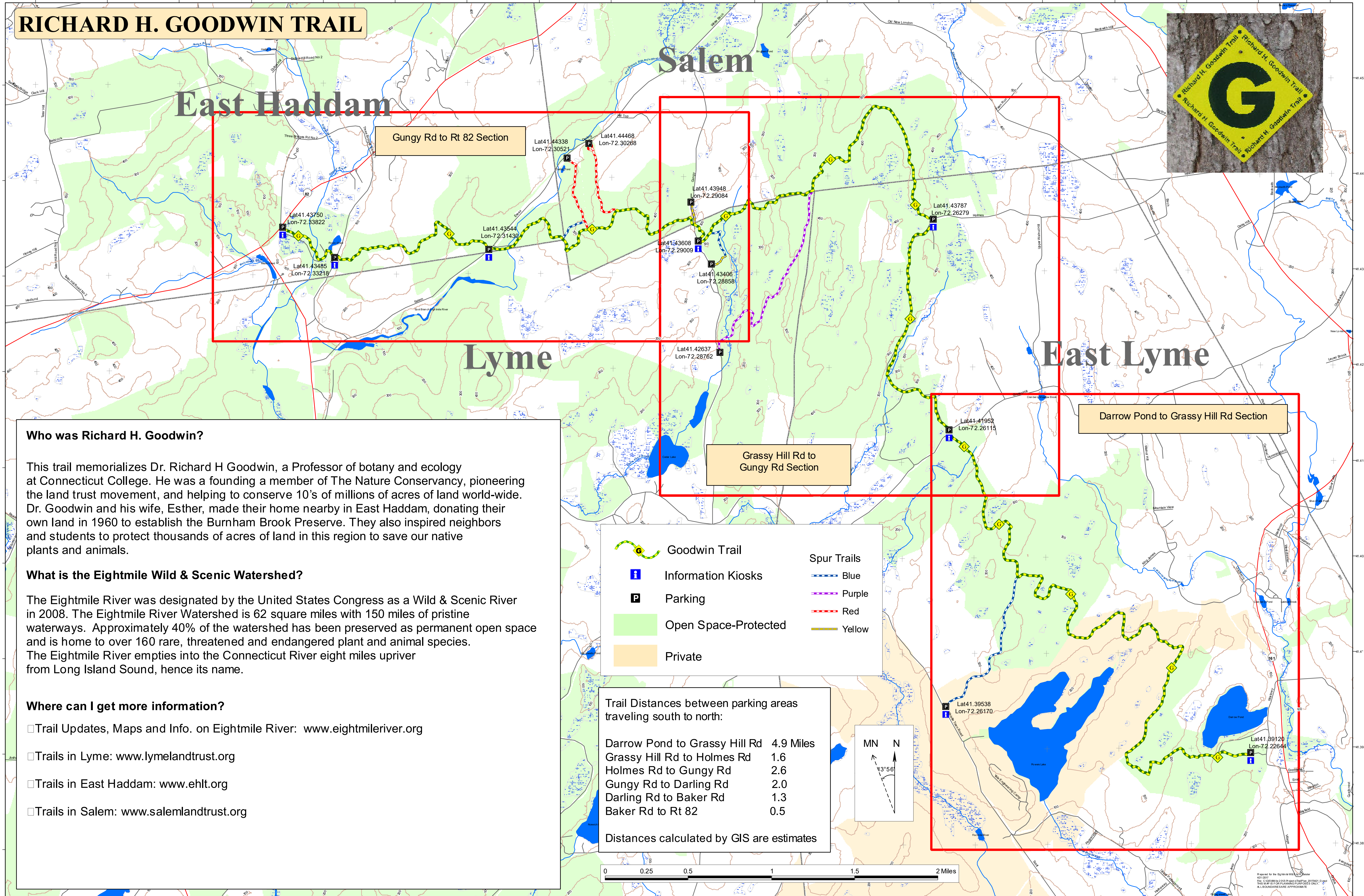


RICHARD H. GOODWIN TRAIL



Who was Richard H. Goodwin?

This trail memorializes Dr. Richard H Goodwin, a Professor of botany and ecology at Connecticut College. He was a founding member of The Nature Conservancy, pioneering the land trust movement, and helping to conserve 10's of millions of acres of land world-wide. Dr. Goodwin and his wife, Esther, made their home nearby in East Haddam, donating their own land in 1960 to establish the Burnham Brook Preserve. They also inspired neighbors and students to protect thousands of acres of land in this region to save our native plants and animals.

What is the Eightmile Wild & Scenic Watershed?

The Eightmile River was designated by the United States Congress as a Wild & Scenic River in 2008. The Eightmile River Watershed is 62 square miles with 150 miles of pristine waterways. Approximately 40% of the watershed has been preserved as permanent open space and is home to over 160 rare, threatened and endangered plant and animal species. The Eightmile River empties into the Connecticut River eight miles upriver from Long Island Sound, hence its name.

Where can I get more information?

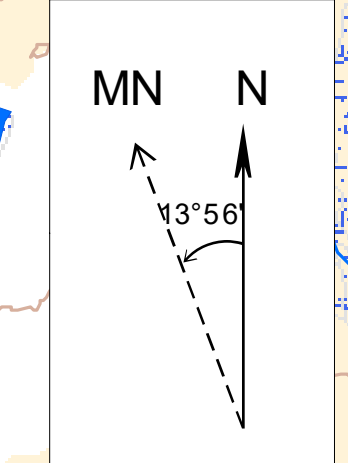
- Trail Updates, Maps and Info. on Eightmile River: www.eightmileriver.org
- Trails in Lyme: www.lymelandtrust.org
- Trails in East Haddam: www.ehlt.org
- Trails in Salem: www.salemlandtrust.org

	Goodwin Trail		Spur Trails
	Information Kiosks		Blue
	Parking		Purple
	Open Space-Protected		Red
	Private		Yellow

Trail Distances between parking areas traveling south to north:

Darrow Pond to Grassy Hill Rd	4.9 Miles
Grassy Hill Rd to Holmes Rd	1.6
Holmes Rd to Gungy Rd	2.6
Gungy Rd to Darling Rd	2.0
Darling Rd to Baker Rd	1.3
Baker Rd to Rt 82	0.5

Distances calculated by GIS are estimates



72.36667° W 72.35833° W 72.35° W 72.34167° W 72.33333° W 72.325° W 72.31667° W 72.30833° W 72.3° W 72.29167° W 72.28333° W 72.275° W 72.26667° W 72.25833° W 72.25° W 72.24167° W 72.23333° W 72.225° W 72.21667° W